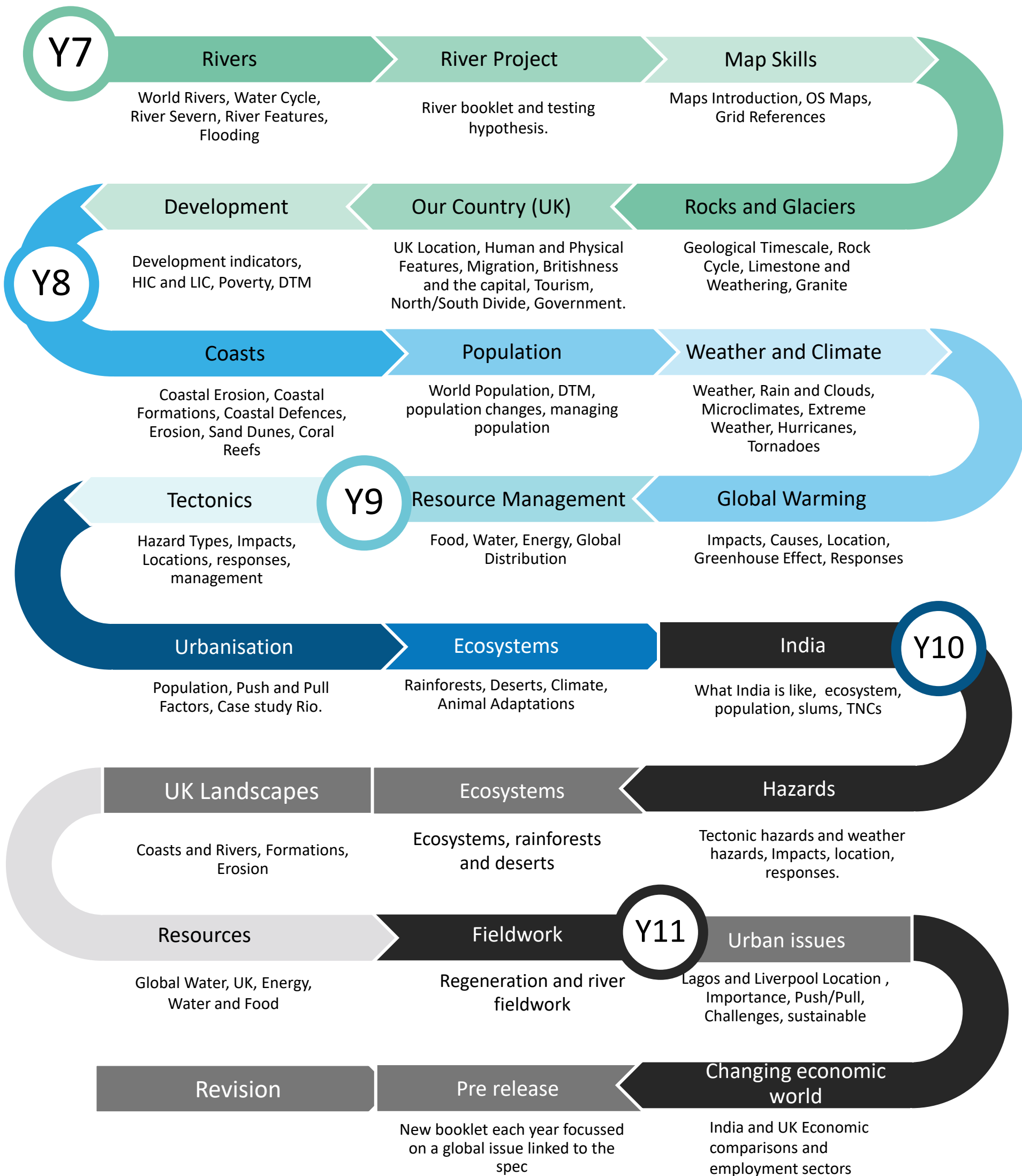


# Geography LEARNING JOURNEY





# YEAR 7 Geography LEARNING JOURNEY

Y7

## Introduction to geography

What is geography?

## World Rivers

Location of world rivers giving examples and features of river basin

## The Water cycle

Describing the different ways water moves completing the story of a raindrop.

## Flooding

Why rivers flood focusing on specific examples and the different ways flooding can be managed

## River Features

How levees form the formation of waterfalls and where they are found and oxbow lake formation

## River Severn

Explain the changes between the upper, middle and lower courses using the rivers Severn as an example

## Maps Introduction

Different types of maps and their uses. History of OS.

## OS Maps

Understanding the different symbols used on OS Maps.

## Grid References

How to complete 4 and 6 figure grid references.

## GIS

Focusing on the history of GIS and how it works/applications

## Interpreting Maps

How to interpret maps and answer exam style questions.

## Map Topography

Measuring scale and distance on maps and how scale and distance work on maps.

## Geological Timescale

Explain the geological timescale of the earth and the features of each era

## Rock Cycle

What are the main types of rock and explain how rocks change properties over time

## Limestone and Weathering

Formation of limestone features and how limestone is used in everyday life

## UK Location

Features of the UK, political and relief maps

## Glacial landscapes

How glaciers impact the land and the processes causing this. Human uses of glaciers and conflict.

## Glaciers

What are glaciers and how do they move, features of glaciers

## UK weather

Why does the weather of the UK vary so much.

## Migration

History of UK migration and the positives and negatives of this.

## London

what is London like? Focusing on the ways it has changed.

## Development example

Focus on Africa and the impact of development

## Development

Development indicators, Causes of the development gap

## Tourism

Why do people choose to visit the UK? What benefits and problems does this bring?



# YEAR 8 Geography LEARNING JOURNEY

Y8

## Coastal Erosion

Different types of erosion, fetch.

## Coastal Formations

Explain the formation of different coastal landforms and the ways beach material moves.

## Coastal Defences

Assess the pros and cons of coastal defences.

## Coral Reefs

Explain the major threats to coral reefs and the different ways we can protect them.

## Sand Dunes

The different types of sand dunes and the habitats created by them.

## Coastal erosion

Using specific examples in the UK what impact does coastal erosion have?

## World population

How and why has world population grown? What causes birth and death rates to change.

## DTM

What is the Demographic Transition Model and what does it show?

## Population pyramids

How do we show population changes

## Population structure

Aging and youthful populations

## Managing population

One child policy, 3 or more, transmigration.

## Migration issues

How does migration impact different parts of the world

## Weather and Climate

What are the differences between weather and climate?

## Weather

The different factors impacting the weather around the world and the different types of weather.

## Rain and Clouds

Using images distinguish the different types of clouds. The different types of rainfall.

## Hurricanes and Tornadoes

How do tornadoes happen and what are their impacts?

## Extreme Weather

Give examples of UK extreme weather.

## Microclimates

The different types of microclimates and where to find them.

## Causes of Climate Change

Evidence of climate changing, Natural causes of climate change, enhanced greenhouse effect

## Impacts of Climate Change

Social, Economic impacts.

## Mitigation or Adaptation

Renewable energy and eco homes. Can climate change be stopped?

## Distribution of Resources

How are resources distributed globally and what impact does this have?

## UK Resources

Assessing this UK demand for food, water and energy.

## Global resources

Supply and demand issues for food globally. Food supply case study.

## Energy Supply

Describe strategies to increase energy supply. Case study to improve energy supply.

## Energy Management

Supply and demand for energy.

## Sustainable Food

How can we manage food supply to be more sustainable?



# YEAR 9 Geography LEARNING JOURNEY

Y9

## Hazards

Define natural hazards with examples, what affects the impacts of them?

## The Movement of the Earth

Why is Saltburn moving away from New York?  
Earth's structure, tectonics and convection currents.

## Plate Movement

Explain what happens at different plate boundaries.  
Constructive Conservative  
Destructive

## Limiting Damage

How can deaths be lowered from natural hazards through MPPP?

## Earthquakes

Assess the Richter and Mercalli scales and explain using case studies why wealth is so important.

## Volcanoes

The formation of Hawaii and what would happen globally if a super volcano erupted?

## What is an ecosystem?

Overview of the factors involved in an ecosystem's nutrient cycle.

## Ecosystems Location

What are the main world ecosystems and where are they located? Example of a small scale UK ecosystem.

## Deserts

Explain what the climate is like in deserts

## Rainforest Management

Ways to mitigate the challenges rainforests face. Explain what the climate is like and what impact is tourism having here?

## Rainforests

Locate rainforests and describe their structure. Explain their opportunities and challenges.

## Desert adaptations

How plants and animals adapt. What is desert life like?

## Urbanisation

Why and where do people move. Assess the push and pull factors.

## Megacities

The growth of megacities around the world. Explain the problems and benefits they bring.

## Rio

Rio case study focusing on the growth and opportunities and challenges the city faces.

## Gangs

How have gangs been allowed to control large areas of Rio

## Opportunities and challenges

What are the benefits and issues of living in Rio

## Favelas

What is life like in the favelas, how does this impact people

## India

What is India like, development, job structure etc

## India's Climate

How is the climate of India so varied

## Slums

What are the slums of India like

## TNCs

Positives and negatives of transnational companies



# YEAR 10 Geography LEARNING JOURNEY

Y10

## Tectonic Hazards

Volcanoes and earthquakes. Focusing on the distribution of activity and the threats posed

## Primary and secondary

Explain the differences between the primary and secondary effects.

## Management

The different ways tectonic hazards can be reduced through MPPP.

## Extreme Weather

The impact of tropical storms and one example of extreme weather event in the UK

## Atmospheric Circulation

Understand the relationship between global atmospheric circulation and tropical storms.

## Case studies

Using two case studies show how the effect and responses vary between areas of contrasting wealth.

## Climate Change

Human and natural causes of climate change. Mitigation of climate change. The impacts of climate change.

## Ecosystems

One example of small-scale UK ecosystem and the inter – relationships within a natural system.

## Rainforest Characteristics

The characteristics of rainforests and interdependence. Location of rainforests.

## Desertification

The opportunities and challenges found in hot deserts. Focusing on the Sahel.

## Desert Characteristics

The characteristics of hot deserts and the interdependence. Location of hot deserts.

## Deforestation

Issues and opportunities of rainforests and the management of them.

## Coastal Processes

The physical process found along coasts and the different types of transport erosion and deposition.

## Coastal Landforms

Characteristics and formation of landforms resulting from erosion and deposition. Specific UK landform examples.

## Coastal Management

Impact of coastal erosion on people and assessing hard and soft engineering strategies. Using UK example.

## Flooding Causes

How physical and human factors impact flood risk. The use of Hydrographs

## Fluvial Landforms

Characteristics and formation of landforms resulting from erosion and deposition.

## Fluvial Processes

Different types of erosion, transportation and deposition. How these processes change the river as water moves downstream.

## Flooding impacts/Management

Assessing the use of hard and soft engineering. One example used of flood management strategies.

## Fieldwork Human

Regeneration in Middlesbrough and the impact of regeneration on the area.

## Fieldwork Physical

Impact of coastal erosion on people and assessing hard and soft engineering strategies. Using UK example.

## Water

Demand for water and the impacts of water insecurity. What factors affect water availability? Strategies to increase water supply.

## UK Resources

The changing demand and provision of resources in the UK creating challenges and opportunities.

## Global Resources

The significance of resources and the global inequalities including supply and consumption.



# YEAR 11 Geography LEARNING JOURNEY

Y11

## Urban Change

The patterns of urban change globally and trends between HIC and LIC countries.

## Push and Pull

Factors affecting the rate of urbanisation – migration (push – pull theory), natural increase. Emergence of megacities.

## Lagos Overview

Location of Lagos and the importance of the city. Causes of growth.

## Liverpool Opportunities and challenges

Focusing on the social economic and environmental aspects of the city including the Anfield Project

## Liverpool Overview

Location and the importance of the city. Causes of growth.

## Lagos Opportunities and Challenges

Focusing on the social economic and environmental aspects of the city including Makoko.

## Urban Sustainability

Features of sustainable urban living and how transport can impact this. Curitiba focus.

## Economic Development

The different ways of classifying parts of the world according to their levels of development.

## Development Gap

Overview of the strategies used to reduce the development gap with Kenya tourism example.

## Issue Evaluation

Critical thinking and problem – solving element. Practice of geographical skills and use of resource booklet.

## Economic Future UK

Changes in the UK economy and the ways this has affected and continue to affect employment and regional growth.

## LIC and NEE Growth

LIC and NEE rapid economic growth leading to changes in development.